

Workforce Housing Summit

June 25, 2008



**Washington
Smart Growth Alliance**

Collaborative Partnership



- ❑ Chesapeake Bay Foundation
- ❑ Coalition for Smarter Growth
- ❑ Enterprise Community Partners
- ❑ Greater Washington Board of Trade
- ❑ Metropolitan Washington Builders' Council
- ❑ ULI Washington

Goals of the Alliance



- Enhance regional collaboration
- Encourage mixed-use, pedestrian- and transit-oriented development projects
- Promote housing and transportation choices for a range of incomes throughout the region, particularly in infill situations
- Respect and conserve significant environmental, cultural, and recreational resources

Recognition Programs



- Provide independent third-party recognition from business, development, environmental and civic organizations
 - Smart Growth Recognition Program
 - Regional Conservation Priorities Program
 - Government Best Practices

MetroWest – Vienna Metro



Select An Area To Highlight

- ▶ Mid-Highrise Multi-family Residential
- ▶ Low-Rise Multi-family Residential
- ▶ Age Restricted/Elderly Housing
- ▶ Two over Two Multi-family Residential
- ▶ Public Recreation/Meeting Facility
- ▶ Townhouse Units
- ▶ Retail Locations
- ▶ Pedestrian Connectivity
- ▶ Office Buildings



To go back to the pushpins, click here.



Click here to see a video flyover of the site (7MB)

MetroWest NW Quad





Reality Check

Envisioning our region's growth



Where Will 2 Million New Residents and 1.6 Million New Jobs Go?

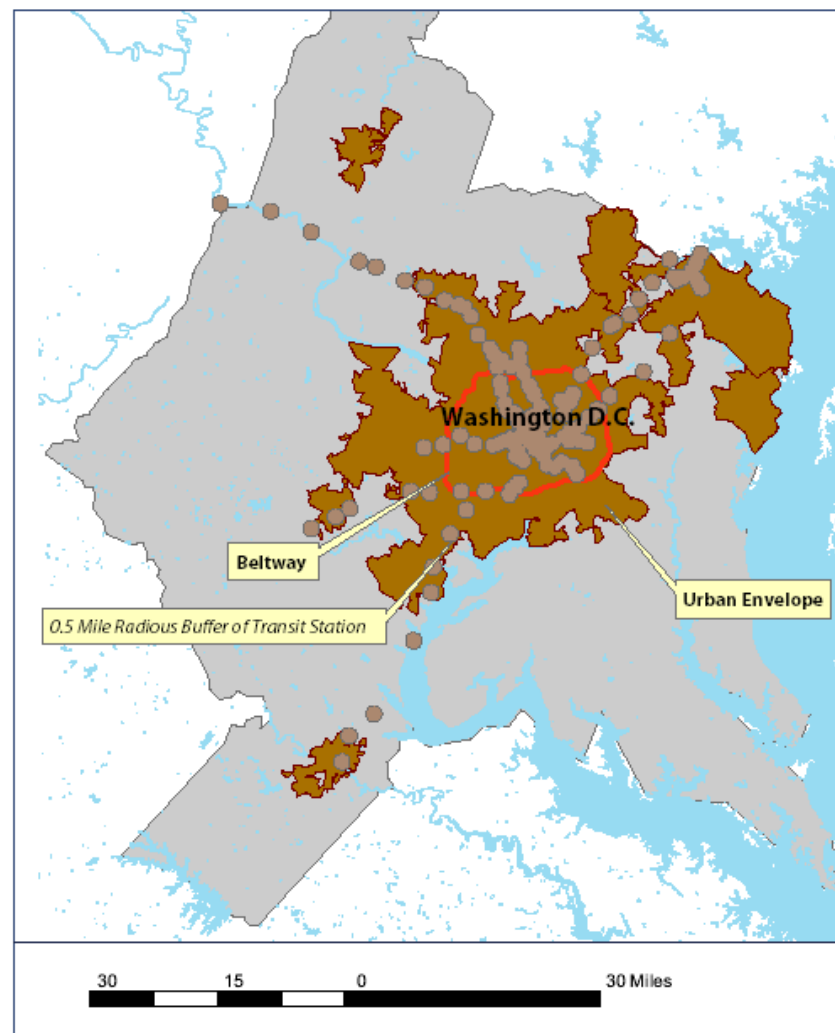
ULI Washington

Smart Growth Alliance

Reality Check Consensus Principles



- Compact, transit-oriented & transit-supportive development
- Infill development
- Live/work/play neighborhoods
- **Better jobs-housing balance**
- Rectify the “East-West” Divide
- Conservation, enhancement of green infrastructure and quality of life



New Focus on Climate Sustainability



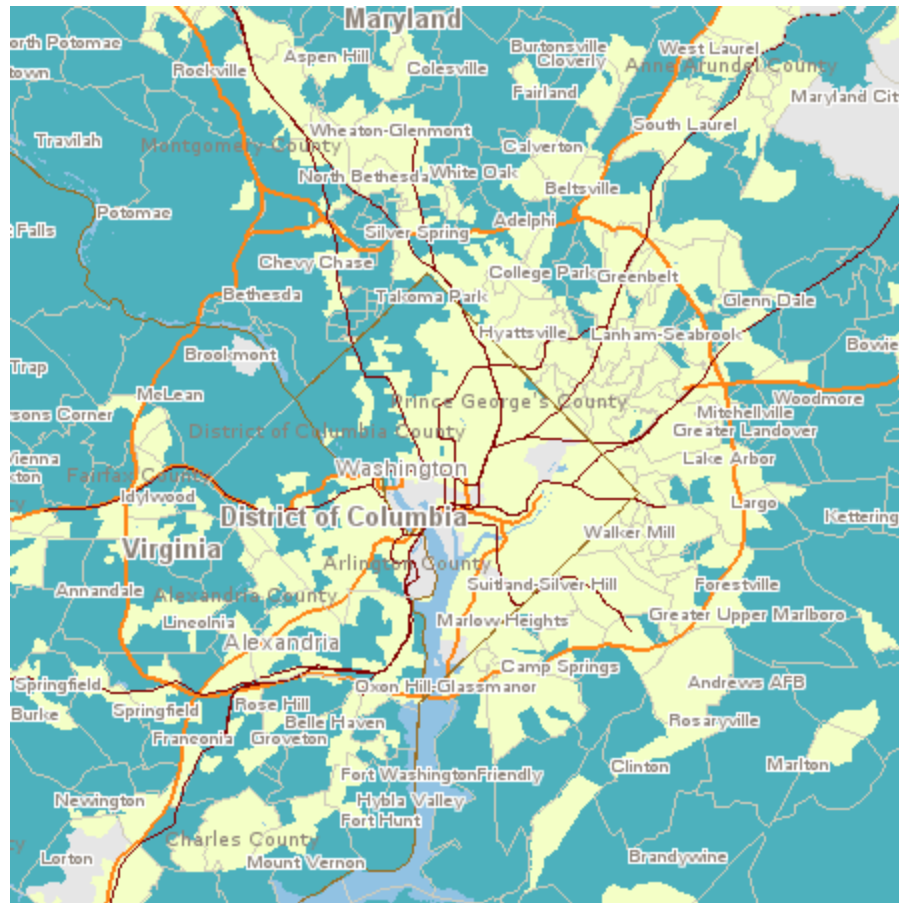
- Climate sustainability
- Intelligent development patterns can make a difference (*Growing Cooler*)
- Green building techniques and long-term affordability
- Transportation efficient locations for housing:
 - Near employment centers
 - Near accessible public transit

Housing + Transportation Affordability Index



- Center for Neighborhood Technology (CNT) with Brookings Institution – two year study
- Affordability including transportation costs
- Based on
- See <http://htaindex.cnt.org/> on study and http://htaindex.cnt.org/map_tool for interactive map

Washington DC Region H+T



Housing + Transportation Index

by Block Group Model Data

Housing and Transportation Costs as
Percent of Income

■ Data not available

■ 0 to 48%

■ Greater than or Equal to 48%

Total Housing and Transportation Costs as
Percent of Income.

For More Information



WASHINGTON SMART GROWTH ALLIANCE

Deborah A. Miness
Executive Director
dminess@sgalliance.org
p: 301-986-5959

4909 Cordell Avenue
2nd Floor
Bethesda, MD 20814
www.sgalliance.org